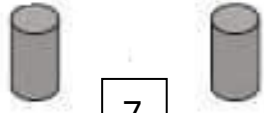
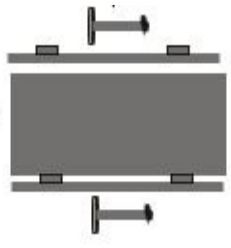




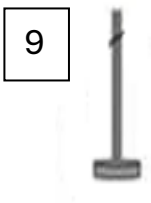
2



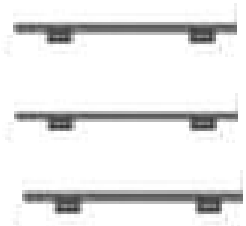
7



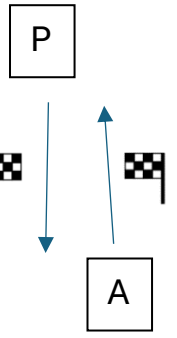
8



9



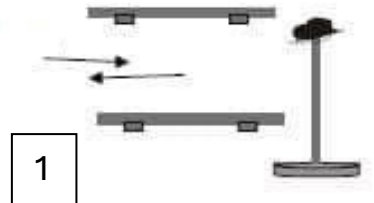
6



5



3



1



4

GIOVANISSIMI/CAVALLI DEBUTTANTI/ESORDIENTI GIOVANI CAVALLI/MULI BARDOTTI MONTATI

- 1. RETROMARCIA DRITTA
- 2. CAMBIO OGGETTO
- 3. CANCELLO
- 4. PASSI LATERALI DRITTI
- 5. OSTACOLO
- 6. STRETTOIA
- 7. OTTO TRA BARILI
- 8. PEDANA CON CAMBIO OGGETTO
- 9. PALINE IN LINEA